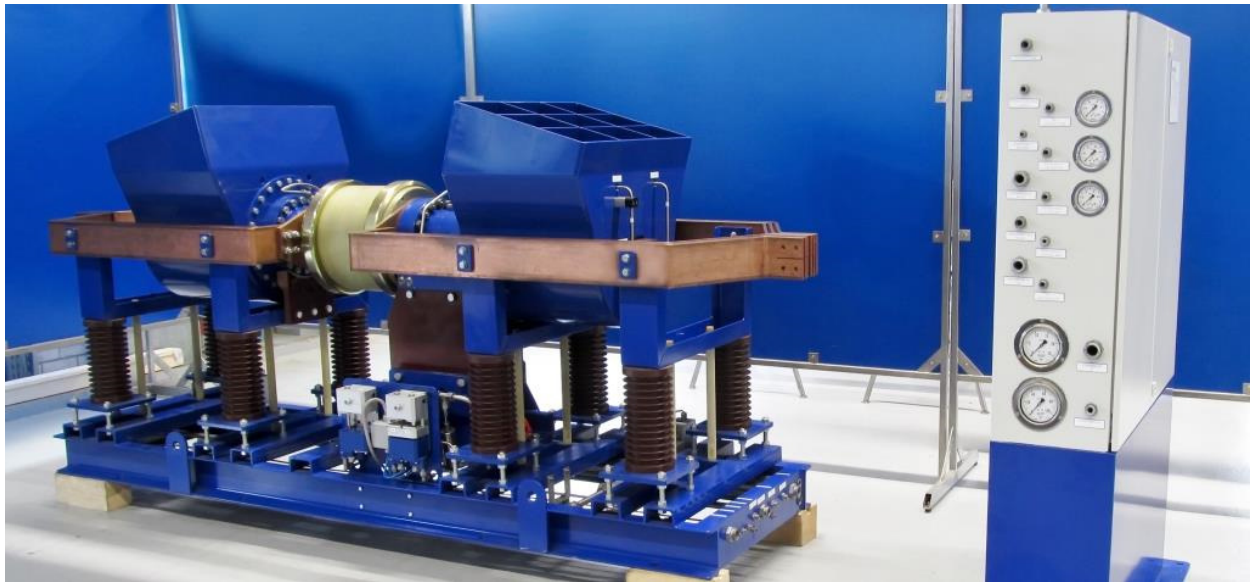


# MTSA Technopower Master Break Switch 1214

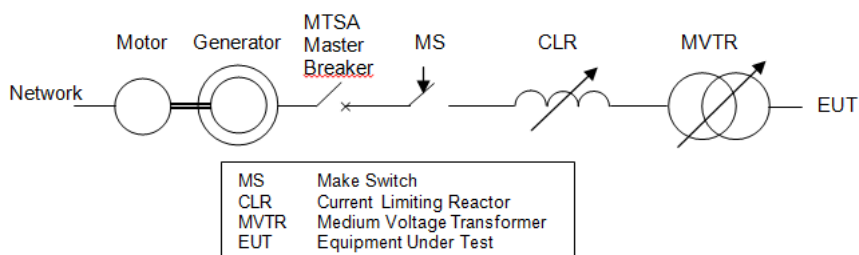


In short circuit laboratories high voltage equipment, for instance a transformer or high voltage switch, is being tested for durability against extreme peak exposures, high voltages and/or high currents.

The MTSA Master Break Switch is an air blast safety switch to cut the current in case the test object fails doing so properly. This will largely prevent damage to the test object and other components in the test circuit. The MTSA Master Break Switch has a much larger breaking capacity than the test object. This combined with an extreme short opening time ensures effective breaking of the current before major damage is done. The MTSA Master Break Switch breaks the current well within half a current cycle, which is much faster than comparable systems available on the market.

### Main specifications:

Rated opening time	<7 ms
Rated voltage	16.8 kV at 60 Hz & 145 kA 15.4 kV at 50 Hz & 160 kA
Max. breaking test current	165 kA



**MTSA Technopower B.V.**  
Westervoortsedijk 67  
6827 AT Arnhem

**Telefoon** : +31 (0)26 3636310  
**Telefax** : +31 (0)26 3646717  
**E-mail** : mail@mtsa.nl  
**Internet** : www.mtsa.nl